



# UNION CHRISTIAN COLLEGE ,ALUVA

Aluva, 683102  
Kerala, India  
0484-2606033, 2609194, 260 6711  
[www.uccollege.edu.in](http://www.uccollege.edu.in)  
[ucc@uccollege.edu.in](mailto:ucc@uccollege.edu.in)



*ADMINISTRATIVE BLOCK*

## ***Building for Posterity***

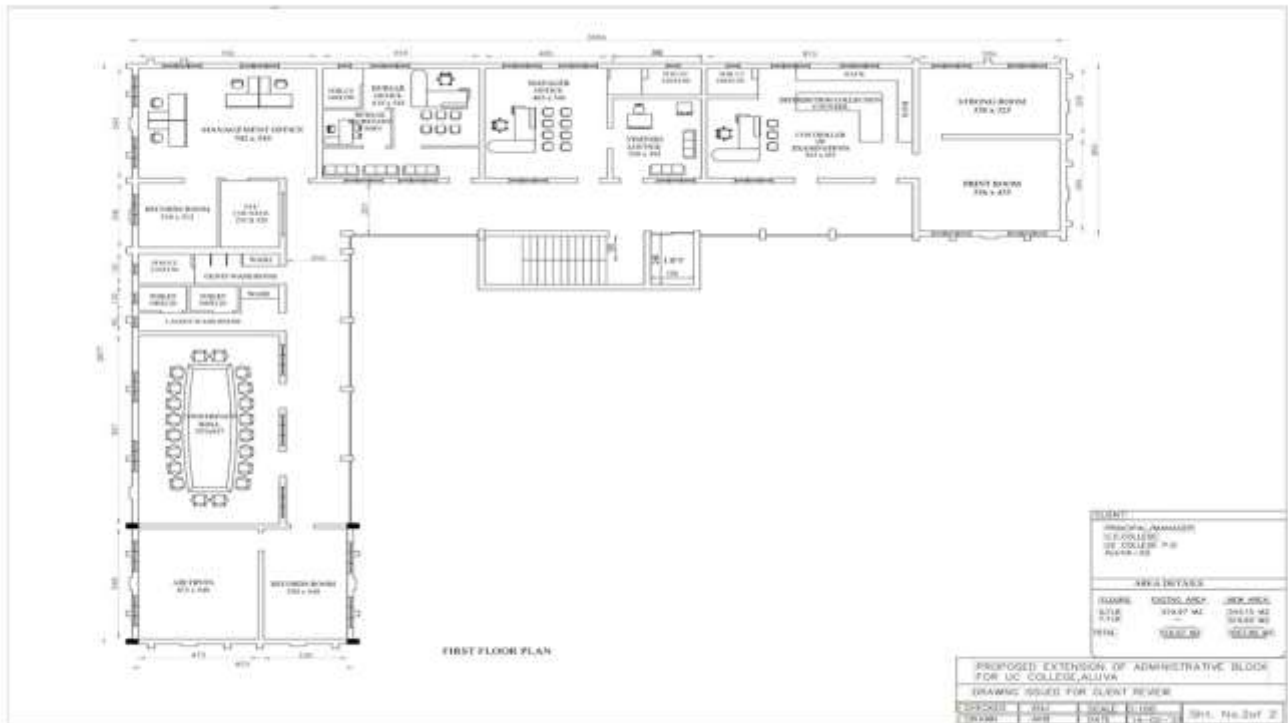
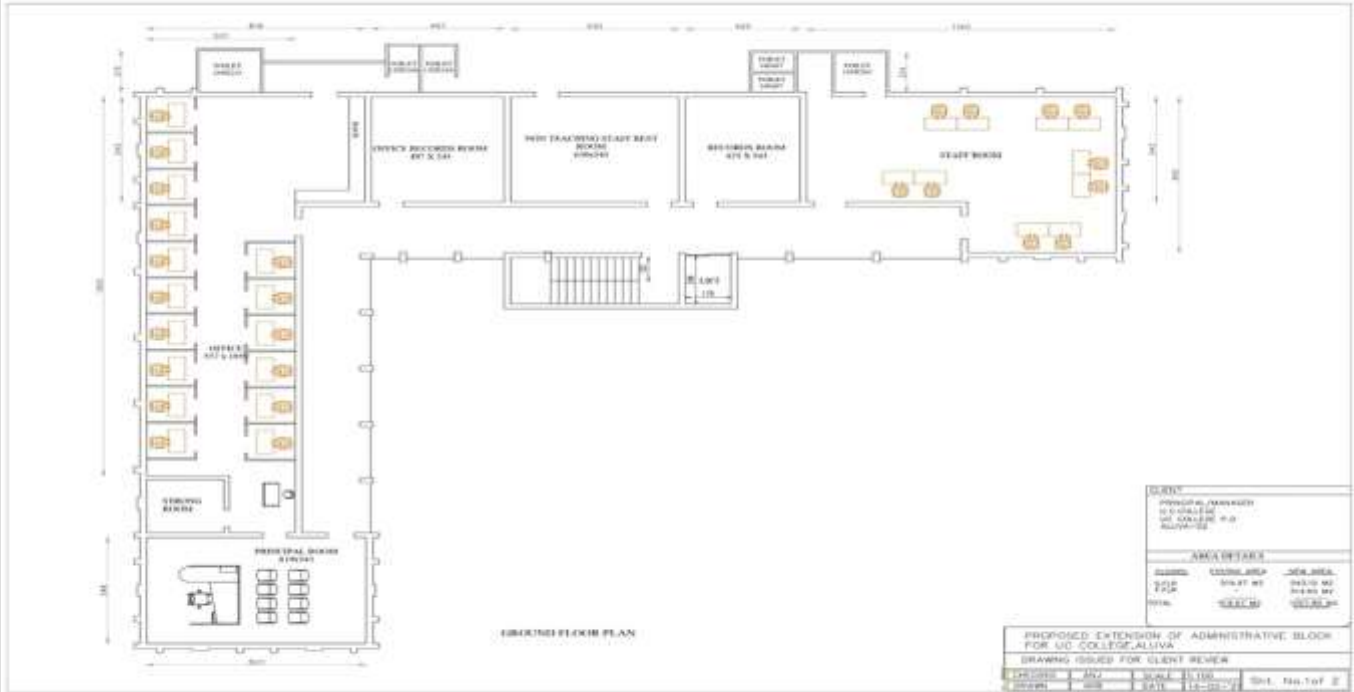
*One of the core priorities for Union Christian College in this centenary year is infrastructure enhancement.*

*Many projects of expansion and renovation have been launched in the campus accordingly. The expansion of the administrative block is a major initiative in this direction.*

*The current administrative block (V. M. Ittyerah Block) houses the Principal's office along with the Manager's office and the Bursar's office. The college office functions from this building and other facilities like the staff room and strong room are also accommodated here. An expansion has become inevitable due to the growing administrative challenges and space requirements. Hence, a floor above the present structure is being planned.*



*The Manager's office, Bursar's office and the office of the Controller of Examinations would be shifted to this floor. Facilities like a conference hall, an archive room, a records section and a visitor's lounge will also be accommodated here. The new management office will be located here. Upon completion the new expanded administrative block will effectively consolidate all the office and administrative functions of the college.*



**CONTROLLER OF EXAMINATION**

1077 in sq.ft  
Rs: 25,80,000/-

**BURSAR OFFICE**

409 in sq.ft  
Rs:9,80,000/-

**MANAGERS ROOM**

559 in sq.ft  
Rs:13,40,000/-

**MANAGEMENT OFFICE**

708 in sq.ft  
Rs: 17.00,000/-

**CONFERENCE HALL**

639 in sq.ft  
Rs:15,30,000/-

**RECORDS ROOM AND ARCHIVES**

538 in sq.ft  
Rs:12,90,000/-

**COMMON TOILET**

241 in sq ft  
Rs:5,75,000/-

**VERANDAH,STAIR AND LIFT**

1350 in sq ft  
Rs:\_\_\_\_\_

Total Area:  
5540 (in sq.ft)

Floors	Existing Area	New Area
Ground Floor	517.97 M2	543.15 M2(5847 in sq ft) (Rs:50,05,000)
First Floor		514.65 M2
Total	<b>517.97 M2</b>	<b>1057.80 M2(11387 in sq ft)</b>

Estimated Cost: 1.5 Crore + amenities(50 lakhs)